

# G30 Introduction and Body

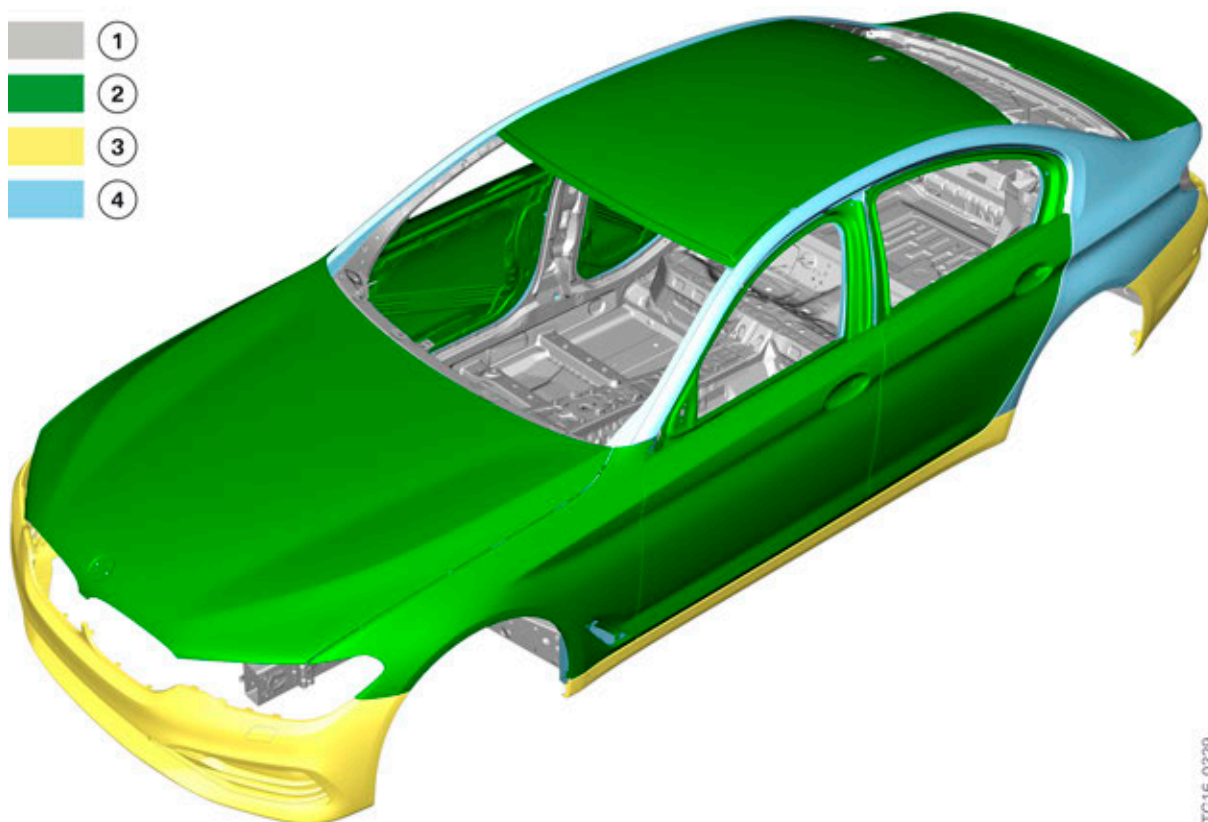
## 3. Body Repair Level 1

### 3.1. Repair Level 1

Taking into account the repair stages of the BMW workshop information system, the body repair work in the Technical Qualification is divided into 3 repair levels. Each of the 3 Body Repair Levels includes certain prerequisites in terms of the qualifications of the employees and the workshop equipment.

The special characteristics of the add-on body parts and the materials used in the outer body skin are described in this chapter. However, the basic functions of the roof and the outer body skin components made of plastic are the same as on other current BMW models. For this reason, these components will not be described in detail here.

### 3.2. Outer body skin materials



G30 Outer body skin

Index	Explanation
1	Other steel grades
2	Aluminum
3	Plastic
4	Deep-drawing steel

# G30 Introduction and Body

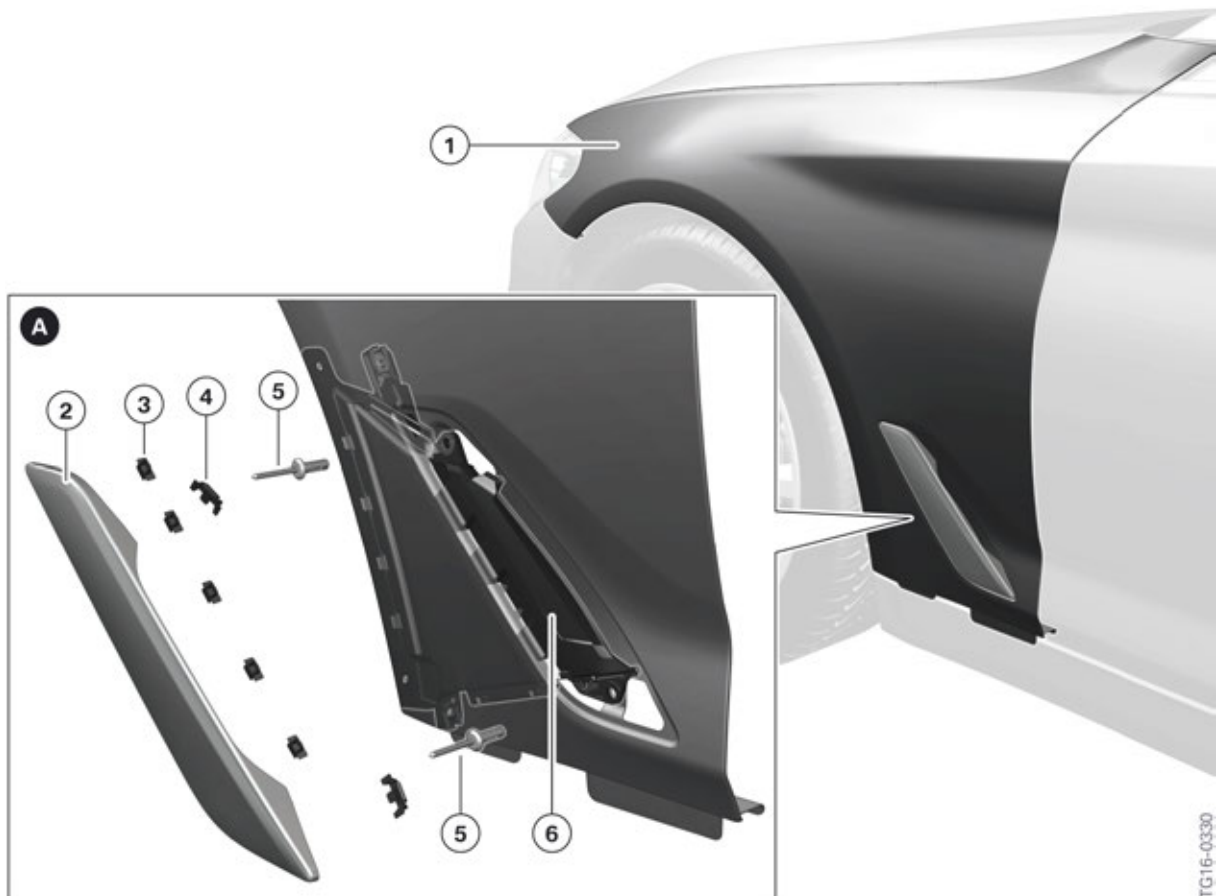
## 3. Body Repair Level 1

As was already the case with the F10, the doors, hood and front side panels are made of Aluminum. In addition, the trunk and the roof of the G30 is also made of Aluminum, which contributes to the significant weight reduction.

The bumper panels at front and rear as well as the side sills are made of plastic as before. However, further development of this material made it possible to reduce the density and weight.

### 3.3. Front fenders

Air Breathers are also used on the front fenders of the G30. The Air Breather is an air outlet behind the front wheel, which diverts the air flowing into the rear region of the wheel well in a controlled manner towards the fender in order to reduce turbulences in the wheel well area. As a result, the drag and fuel consumption of the vehicle is reduced, which in turn means a reduction in carbon dioxide emissions.



G30 Front side panel

TG16-Q330

# G30 Introduction and Body

## 3. Body Repair Level 1

Index	Explanation
A	Air Breather mounting
1	Front left fender
2	Air Breather trim
3	Mounting clips
4	Trim mounting clips
5	Expanding rivet
6	Air duct

### 3.4. Trunk

A trunk made entirely of Aluminum has been used for the first time on the G30. As a result, a weight reduction of 4.2 kg / 9.5 lbs was achieved over the F10. The multi-part layout of the trunk is achieved with the aid of state-of-the-art laser welding techniques.

# G30 Introduction and Body

## 3. Body Repair Level 1



TG16-0520

G30 Trunk

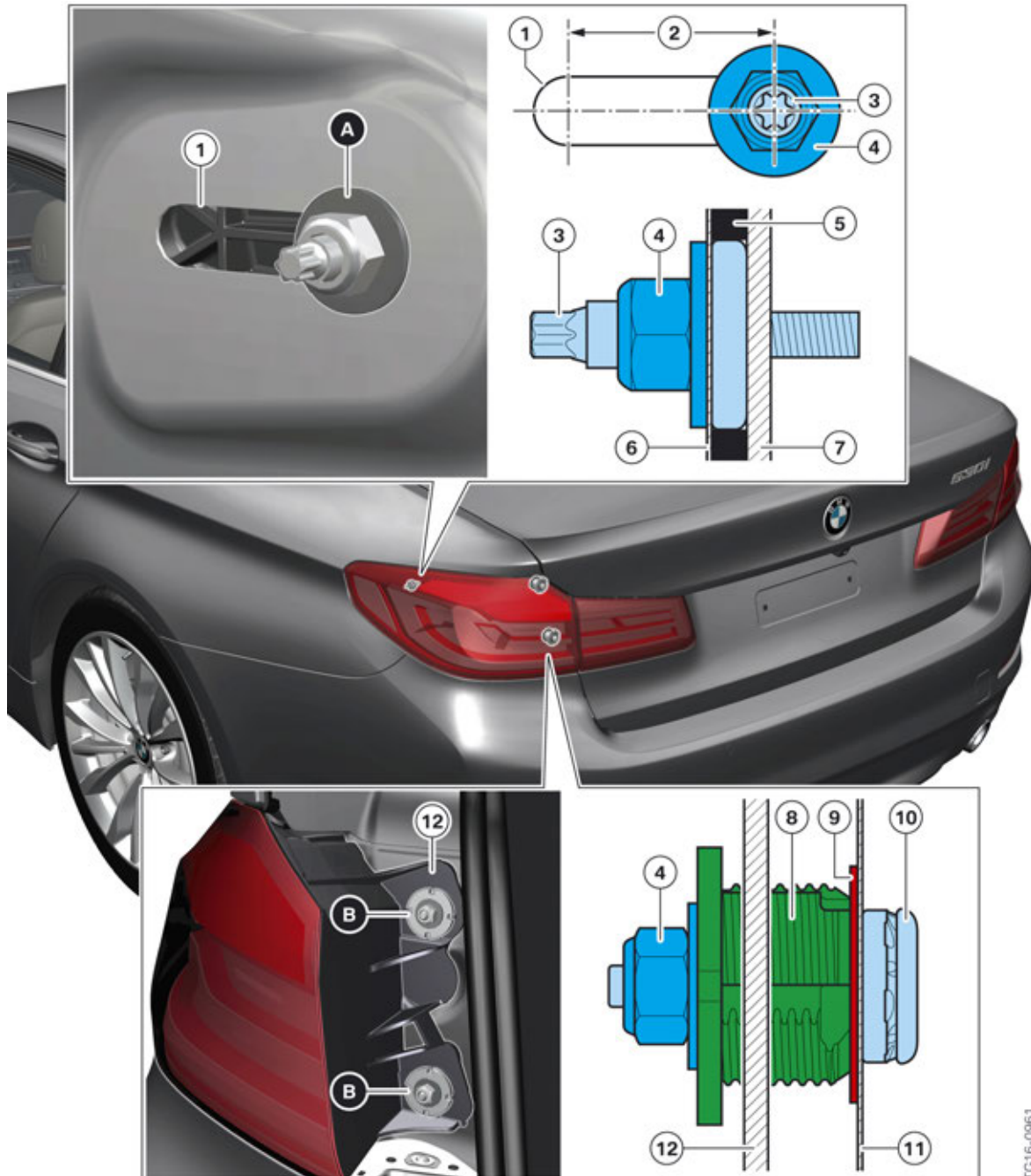
Index	Explanation
1	Trunk outer skin (Aluminum)
2	End plate
3	Trunk inner panel
4	Reinforcement plate with hinge mounting
5	Reinforcement plate with striker mounting
6	Side end plate
7	Outer skin panel with licence plate carrier
8	Rear light mounting panels

# G30 Introduction and Body

## 3. Body Repair Level 1

### 3.5. Rear light

On the G30, the rear light assembly is attached with 3 screws to the body. Due to the very small gap dimensions to the body, it is necessary to adjust the rear lights to the body. Two adjusting elements (figure B) are provided for this purpose; they can be seen when the trunk is open and the trim panel has been removed. To adjust the gap dimensions, the adjusting element can be screwed in or out in the x direction. The mounting bolt (figure A) serves solely for mounting in the Y direction.



TG16-0961

G30 Rear light

# G30 Introduction and Body

## 3. Body Repair Level 1

Index	Explanation
A	Mounting bolt behind the luggage compartment trim panel
B	Adjusting elements
1	Elongated hole
2	Adjustment range in X direction
3	Mounting bolt on the rear light
4	Lock nut
5	Gasket
6	Body
7	Rear light
8	Adjusting element
9	Sealing washer
10	Mounting bolt on the body
11	Body
12	Rear light

# G30 Introduction and Body

## 4. Interior Equipment

### 4.1. Overview

The vehicle interior shows significant further developments in comparison to the F10. The all-round visibility has been improved. This is further supported by the very flat design of the roof function center. In addition, the headliner, which is equipped with sound insulation, helps to make the interior cabin noticeably quieter than the F10.



G30 Front overview

# G30 Introduction and Body

## 4. Interior Equipment

Index	Explanation
1	Gesture recognition camera
2	Roof switch panel
3	Central Information Display (CID)
4	Glove box
5	Hotel position switch
6	Center console
7	Cup holder and wireless charging station
8	Heating and air conditioning controls/audio operating unit with touch operation
9	Glove box, driver's side
10	Instrument cluster

### 4.2. Seats

#### 4.2.1. Front seats

As a design element, the seats are an important element of a sporty-luxurious vehicle interior. Special stitching accents are provided in the form of decorative stitches for the Dakota leather trim and for the Saddle leather trim. The following front seat variants are available for the G30:

	Sports seat	Multi-contour seat
Seat memory	Standard	Standard
Heated seats	Option (OE 494)	Option (OE 494)
Lumbar support	Standard	Standard
Active seat ventilation		Option (OE 453)
Massage function		Option (OE 4T7)

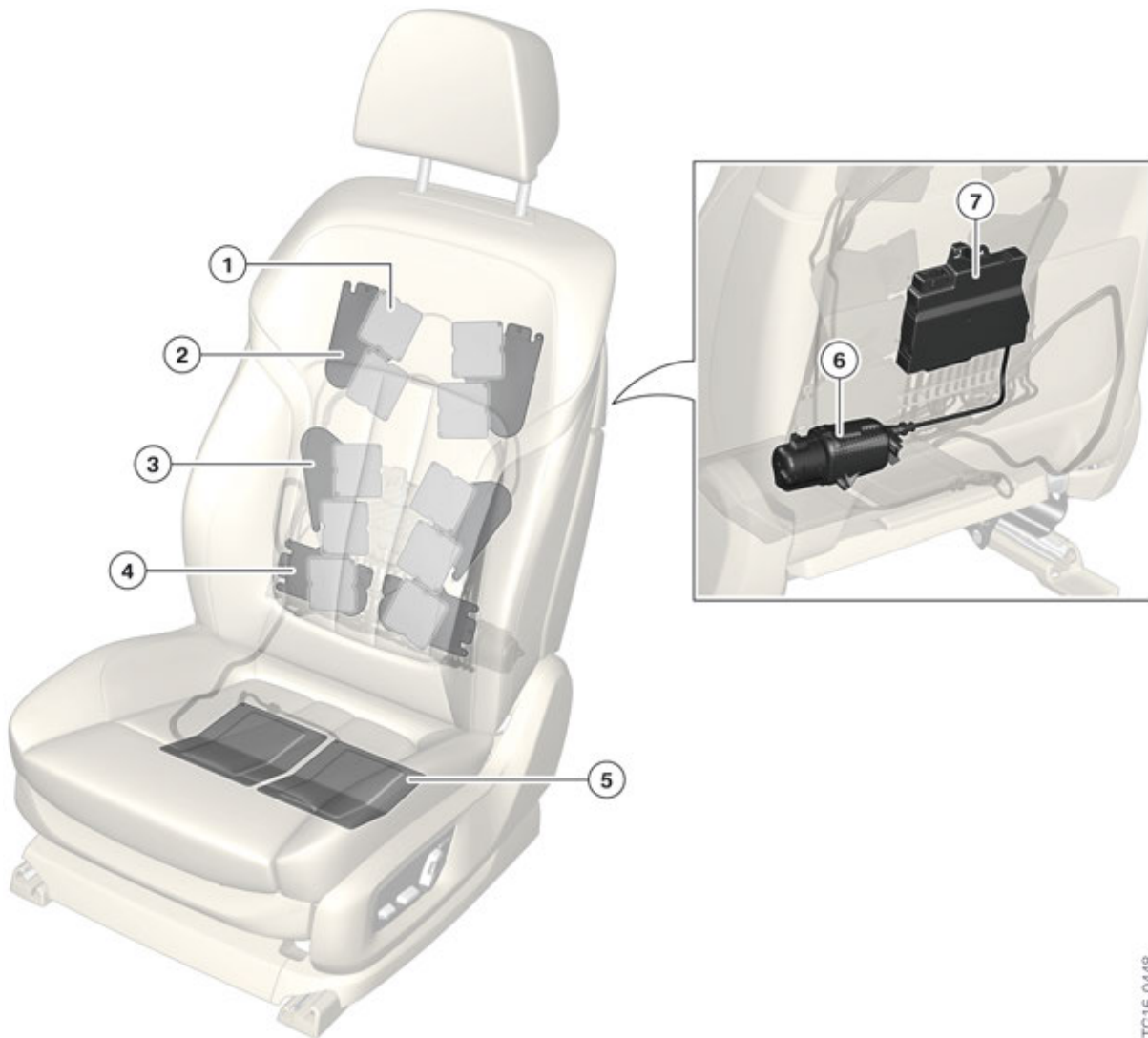
On the multifunction seat, 5 touch-sensitive sensors are integrated in the switches for fore-and-aft seat adjustment. As a result, when the adjustment switch is touched a pop-up is opened in the Central Information Display (CID), which shows the function and adjustment range of the switch that has been touched. Further information on this topic can be found in the Technical Reference Material "ST1501 G12 Complete Vehicle".

#### 4.2.2. Massage functions

A massage programme is offered for the driver and front passenger in conjunction with the multifunction seat. Eight different massage functions in the backrest and seat cushion activate or relax the muscles, thereby helping to relax the back muscles and relieve the strain on the intervertebral discs. Here, the occupants can choose between 3 different intensity levels.

# G30 Introduction and Body

## 4. Interior Equipment



TG16-0448

G30 Multifunction seat

Index	Explanation
1	Air cushion for shoulders (massage)
2	Air cushion on inner backrest (massage)
3	Air cushion for lumbar region (massage)
4	Air cushion for lumbar support
5	Air cushion for seat surface (massage)
6	Seat pneumatics module pump
7	Seat pneumatics module (control unit and valve block)

The massage functions are controlled by the respective seat pneumatics modules.

# G30 Introduction and Body

## 4. Interior Equipment



When working on the pneumatic components, it must be ensured that the lines are routed exactly, otherwise there is a risk of the lines being kinked.

### Mobilization

With the mobilization program, it is possible to choose between the pelvis, upper body or full body. During the massage, the strain on the spine is relieved by targeted body movements.

### Relaxation

Three different regions of the body can be selected for the relaxation program. Targeted massage helps to relax the back, shoulder or lumbar muscles.

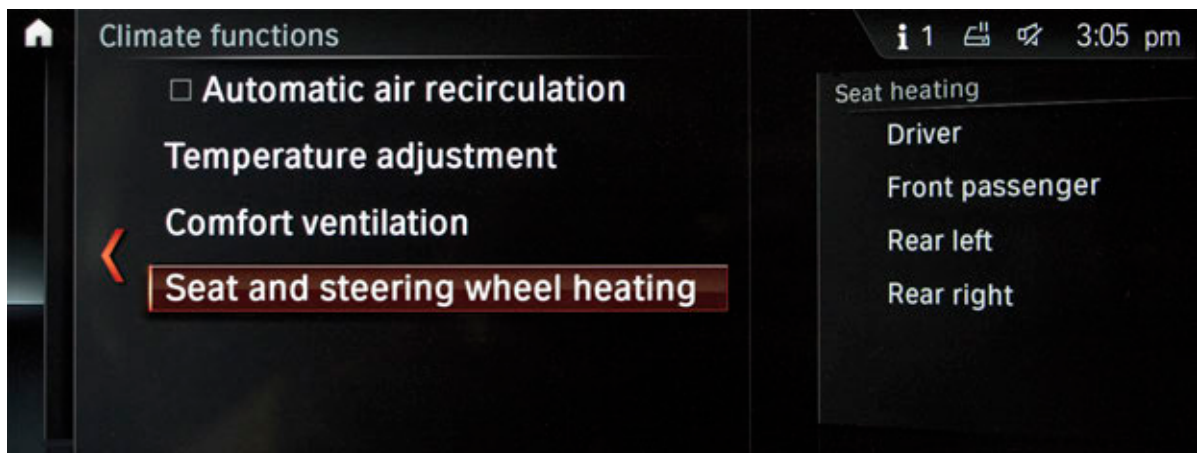
### Vitalization

The vitalization program is made up of both mobilization and relaxation. The occupant can choose between the body areas of upper body and full body. The combination of movement and massage ensures optimum relaxation and recuperation particularly on long journeys.

### 4.2.3. Seat heating for driver/front passenger

For the first time on a BMW vehicle it is now possible to pre-set the seat heating. It is possible to select between the driver and front passenger and to choose the heating stage. If the ambient temperature drops below the pre-set value, set by the driver and the relevant seat belt buckle is latched, then the seat heating is automatically activated as soon as the vehicle drives off. The integrated automatic heating/air conditioning system (IHKA) main menu is opened via the IHKA menu button.

First the seat and steering wheel heating needs to be selected.



G30 Seat heating for driver/front passenger

In the next step a selection needs to be made between driver or front passenger.

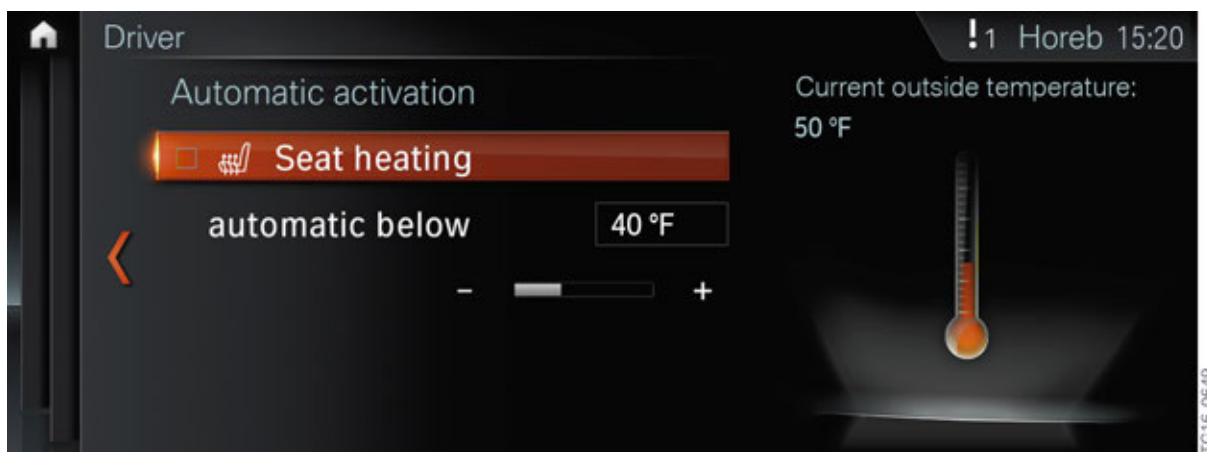
# G30 Introduction and Body

## 4. Interior Equipment



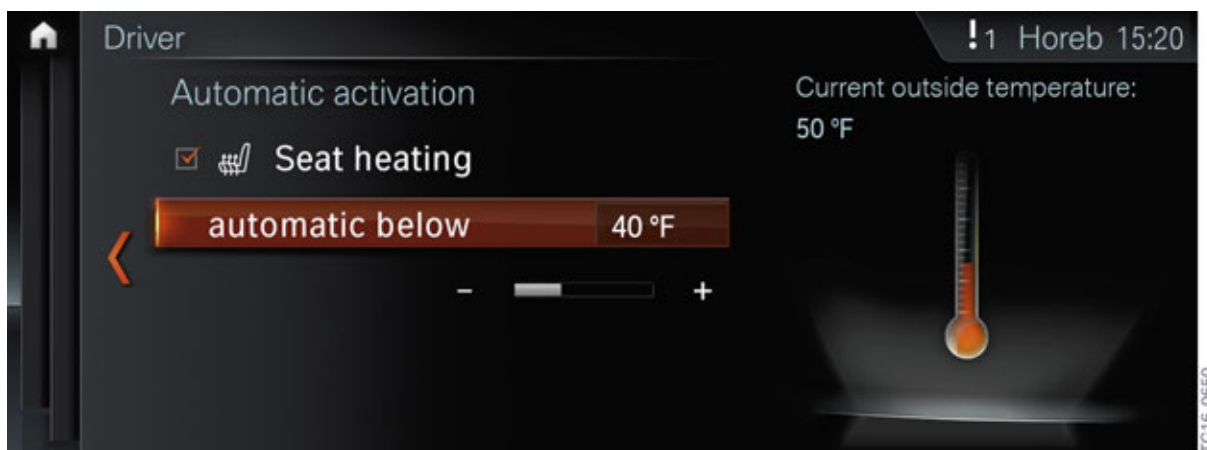
G30 Seat heating for driver/front passenger

In the next step the automatic seat heating needs to be selected with a check mark.



G30 Seat heating for driver/front passenger

In this step the ambient temperature can be set selected by the driver and passenger. If the ambient temperature drops below the selected value, the seat heating is automatically activated.

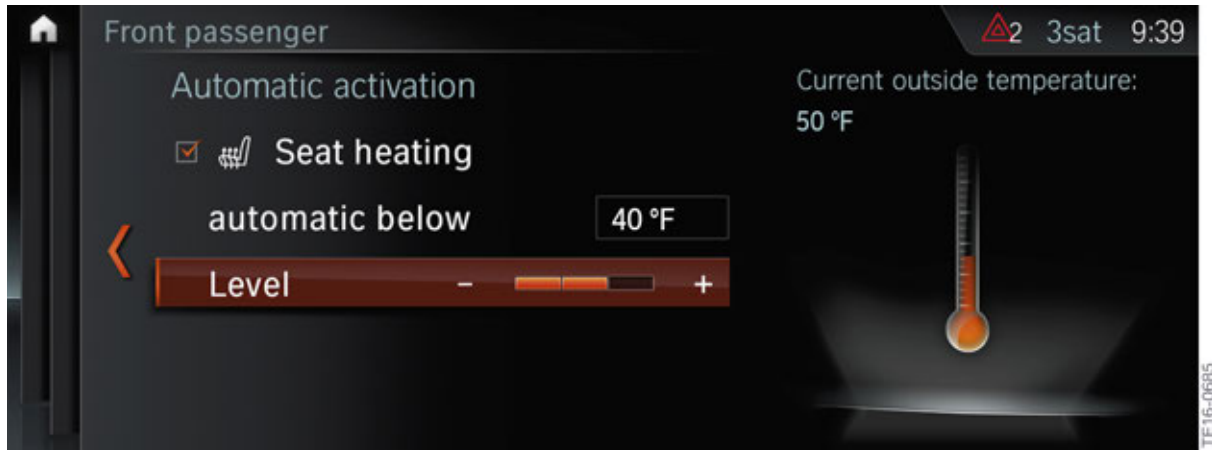


G30 Seat heating for driver/front passenger

# G30 Introduction and Body

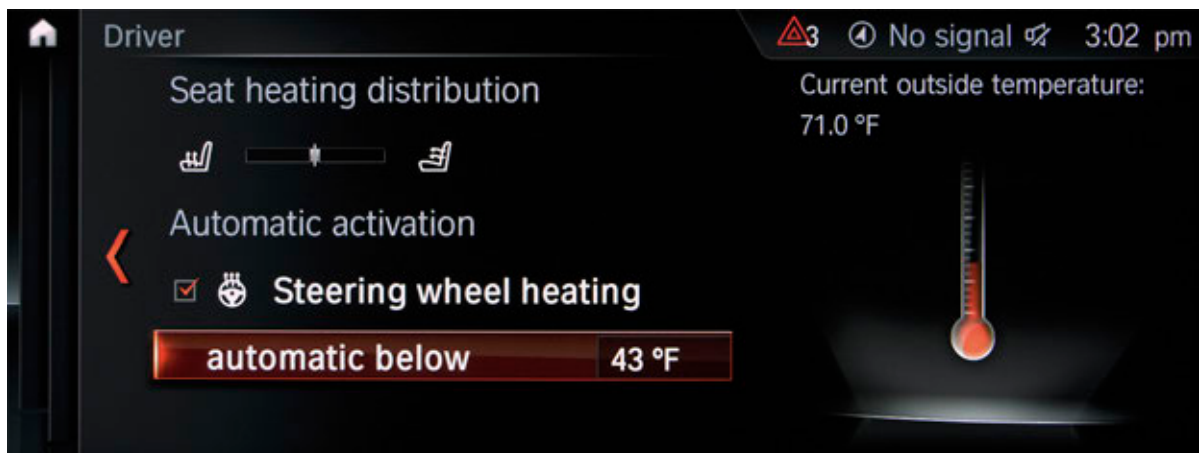
## 4. Interior Equipment

In this step one of three heating stages of the seat heating is set.



G30 Seat heating for driver/front passenger

This function is also offered for the active seat ventilation and for the steering wheel heating.



G30 Steering wheel heating

# G30 Introduction and Body

## 4. Interior Equipment

### 4.2.4. Rear seats

The decorative stitches and contrast colors already familiar from the first row of seats are also carried over into the second row of seats, where they help create a harmonious overall impression. Functionality is underlined thanks to the easily accessible Isofix attachments and the cup holders in the center armrest. The 40:20:40 folding backrest can only be released by the levers from inside the luggage compartment. Rear seat heating is available as optional equipment (OE 4HA).



TG16-0457

G30 Rear seats

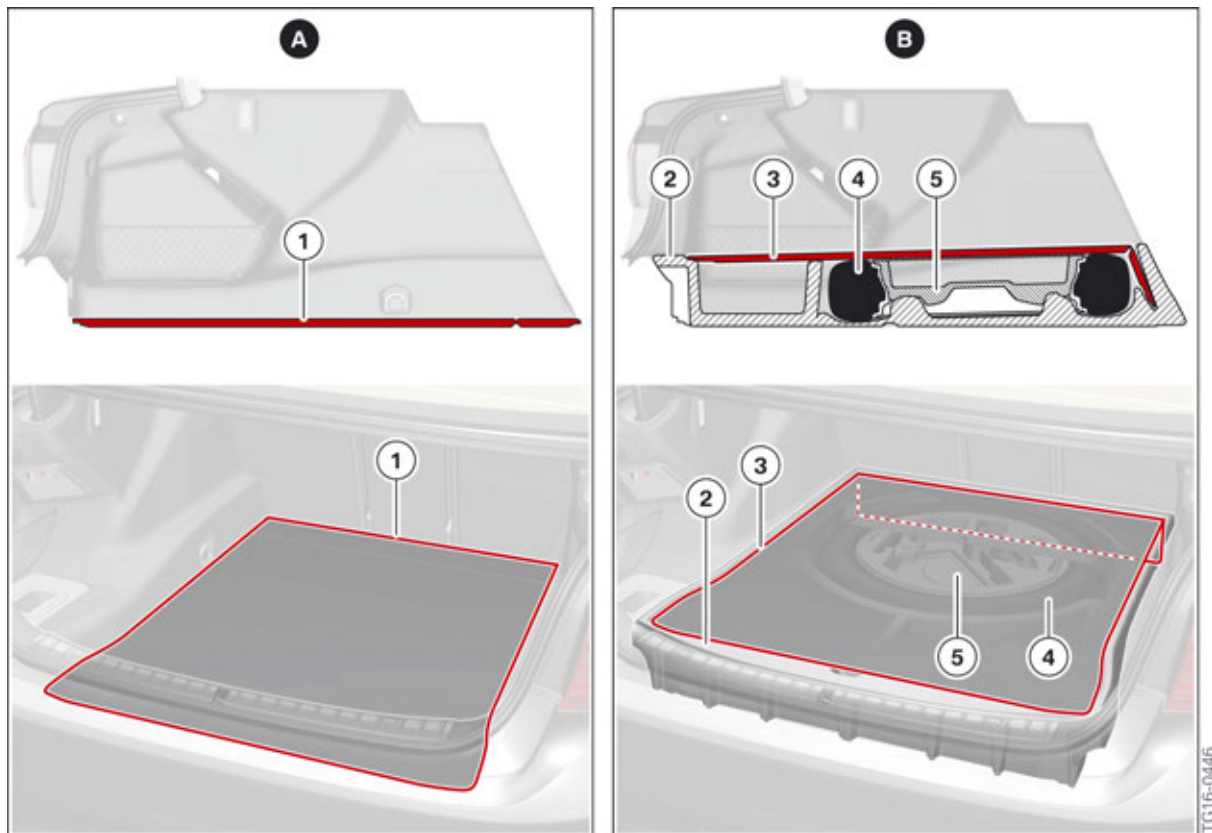
Index	Explanation
1	Cupholder

# G30 Introduction and Body

## 5. Luggage Compartment

### 5.1. Luggage compartment volume

The luggage compartment capacity of the new BMW 5 Series has been increased by 10 liters in comparison to its predecessor, the F10, to 530 liters / 14 ft<sup>3</sup>. By adding a compact spare wheel as optional equipment, the luggage compartment capacity is reduced accordingly. On vehicles with the (OE 300) space saver spare wheel, the luggage compartment capacity can be restored by the customer back up to the full luggage compartment capacity of 530 liters by taking out the insert with the space saver spare wheel. The same removable panel can be used for this purpose.



G30 Luggage compartment

Index	Explanation
A	Luggage compartment without space saver spare wheel
1	Luggage compartment removable panel
B	Luggage compartment with space saver spare wheel
2	Insert for space saver spare wheel
3	Luggage compartment removable panel
4	Space saver spare wheel (OE 300)
5	Insert for jack/tools

# G30 Introduction and Body

## 5. Luggage Compartment

By using the cavities behind the luggage compartment trim panel, it has been possible to house the first aid kit in a separate storage compartment next to the tailgate hinge. The storage compartment with a lid offers further storage options on the left-hand side. On the right-hand side of the luggage compartment customers have access to a storage compartment without a lid. The luggage compartment power distribution box with corresponding fuses is located on the side behind the luggage compartment trim panel.



G30 Luggage compartment storage compartments

Index	Explanation
1	Left/right lashing points
2	Rear power distribution box with fuses
3	Storage compartment without lid
4	Multifunction hook
5	First aid kit compartment
6	Storage net
7	Toolkit storage compartment with lid





Bayerische Motorenwerke Aktiengesellschaft  
Händlerqualifizierung und Training  
Röntgenstraße 7  
85716 Unterschleißheim, Germany