

G30 Telephone and Telematics

2. BMW Apps

The destination can also be sent to the vehicle via ConnectedDrive online. The route guidance will then be suggested in the vehicle where it can be accepted. In this example we illustrate this on the user interface of a G12.



BMW Connected accept sent trip

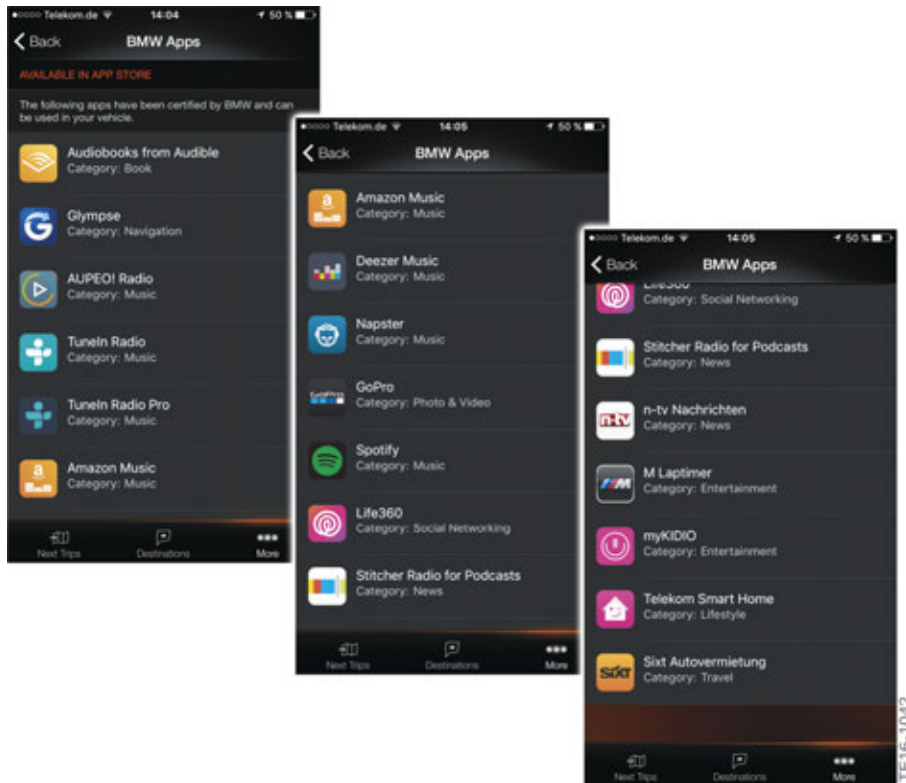
Index	Explanation
1	Main menu
2	BMW messages
3	Select destination
4	Start route guidance

G30 Telephone and Telematics

2. BMW Apps

Third party apps

The BMW Apps menu lists all third-party apps that are currently supported by BMW. These apps can be launched from the individual menus as before, or from the ConnectedDrive menu if they are installed on the smartphone.



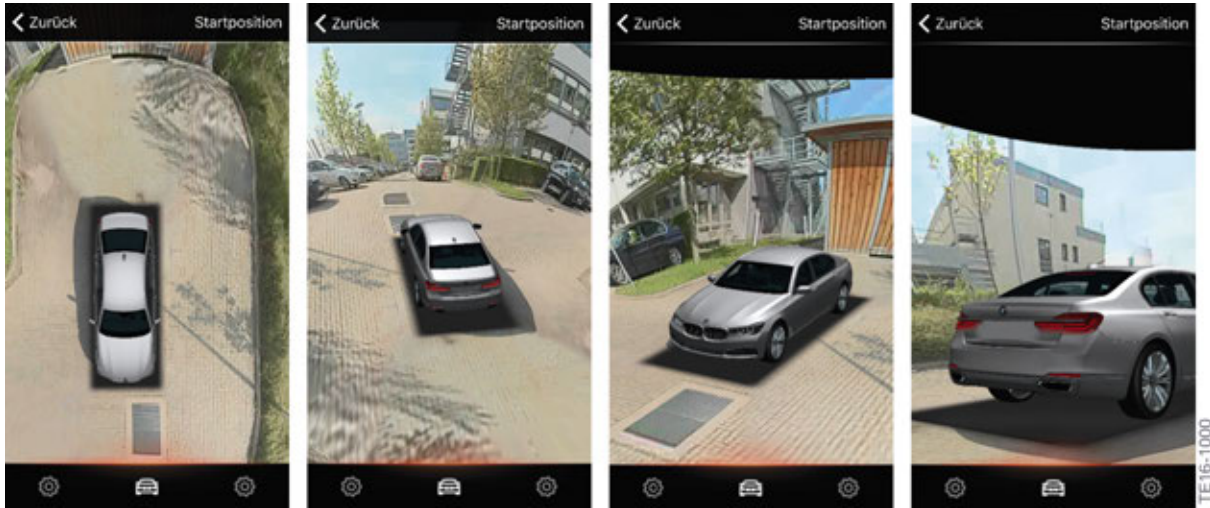
BMW Connected app third-party apps

G30 Telephone and Telematics

2. BMW Apps

2.1.4. Remote 3D View

Remote 3D View is provided for the first time on the G30. This function allows the customer to view the area around his parked vehicle on his smartphone.



G30 Remote View 3D display on smartphone

Service

Below we list some information about BMW Remote 3D View which affects the service:

- A maximum of three recordings in two hours is permitted. (The user will receive a message in the event of a further recording.)
- The Remote 3D View function is an element of standard equipment "Remote Services" (OE 6AP) and is valid for four years. Once this period has expired, the function can be extended via the ConnectedDrive Store for a fee.
- The vehicle shown in the smartphone is always shown in silver paintwork.

Further information

Further information on BMW Remote 3D View can be found in the ST1604 G30 Driver Assistance Systems Training Reference manual.

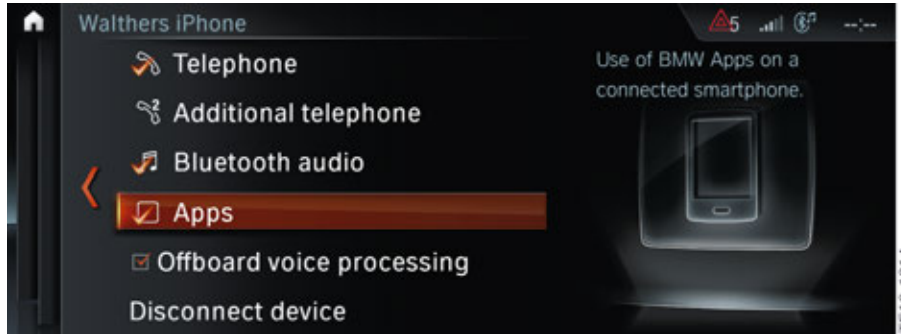
G30 Telephone and Telematics

2. BMW Apps

2.2. Wireless connection

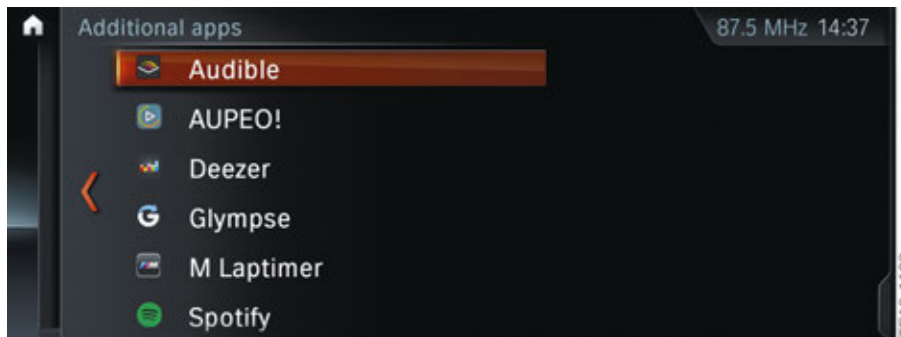
A base plate is no longer provided for any telephone system in the G30. For this reason, the telephone is connected to the head unit either wireless or through a USB port.

A check mark must be set for Apps if these are to be used in the vehicle via Bluetooth when the smartphone is coupled in the vehicle.



G30 selecting Apps in the Central Information Display

Apps installed on the smartphone and approved by BMW (including BMW Connected) are selected in the vehicle as previously.



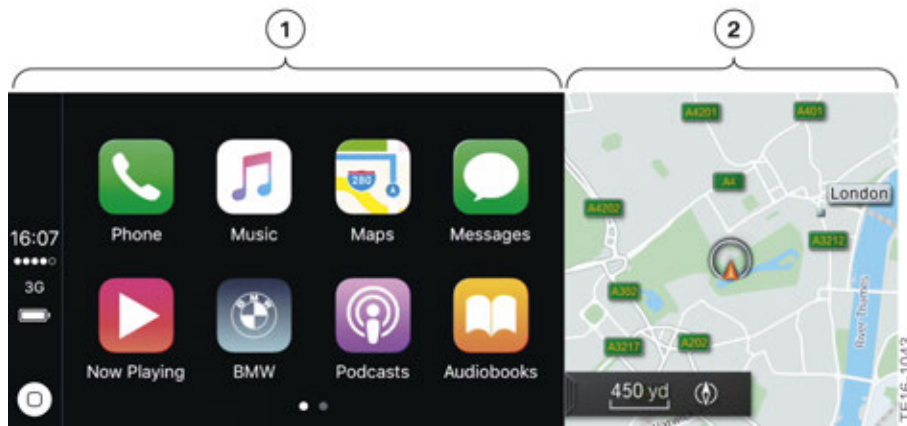
G30 Selecting apps

G30 Telephone and Telematics

3. Apple® CarPlay Preparation

3.1. Introduction

Apple® CarPlay offers the capability of easily and conveniently reproducing selected content from the iPhone® in the vehicle. Displaying the Apple® icons on the Central Information Display (CID) permits intuitive operation and control of the functions.



G30 Apple® CarPlay in the Central Information Display (CID)

Index	Explanation
1	Main screen with Apple® CarPlay
2	Assistance window, here, for example, shown with the BMW navigation map

Apple® CarPlay is displayed only in the main screen. The Apple® CarPlay logo is displayed if there is no function in the assistance window. Apple® CarPlay is activated by pressing and holding the menu button on the controller.

G30 Telephone and Telematics

3. Apple® CarPlay Preparation

3.2. Prerequisites

The vehicle and the iPhone® must satisfy certain prerequisites before Apple® CarPlay can be used.

3.2.1. iPhone®

The Apple® CarPlay function runs on the iPhone® 5 and more recent models.

The iPhone operating system must be at least iOS 9.3.3.

Other Apple® devices (iPad® or iPod®) cannot be connected to the vehicle via Apple® CarPlay.

3.2.2. Vehicle

The Apple® CarPlay preparation optional equipment (OE 6CP) is added to the BMW Online and BMW Apps standard equipment (OE 6AK) and the standard equipment Professional navigation system (OE 609). Selected data attributes are swapped between the smartphone and the vehicle when Apple® CarPlay is used.

Further information about Apple® CarPlay may be found in the ST1610 Infotainment 2016 Product Information.

G30 Telephone and Telematics

4. Telephone Systems

4.1. Equipment

The G30 has two different hands-free mode and charging variants for telephones:

- Convenient telephone with extended smartphone connection (OE 6NS) (standard equipment)
- Telephone with wireless charging (OE 6NW) (optional equipment)

4.1.1. Convenient telephone with extended smartphone connection

No base plate is fitted for the convenient telephone with extended smartphone connection optional equipment. With this equipment it is therefore also not possible to charge a mobile phone through a snap-in adapter. Nor is connection to the roof-mounted antenna possible any longer with this optional equipment.

Convenient telephone with extended smartphone connection is only offered in countries in which the telephone system with wireless charging optional equipment is not available.

Differences over a hands-free system with USB interface

The list below shows the convenient telephone with extended smartphone connection:

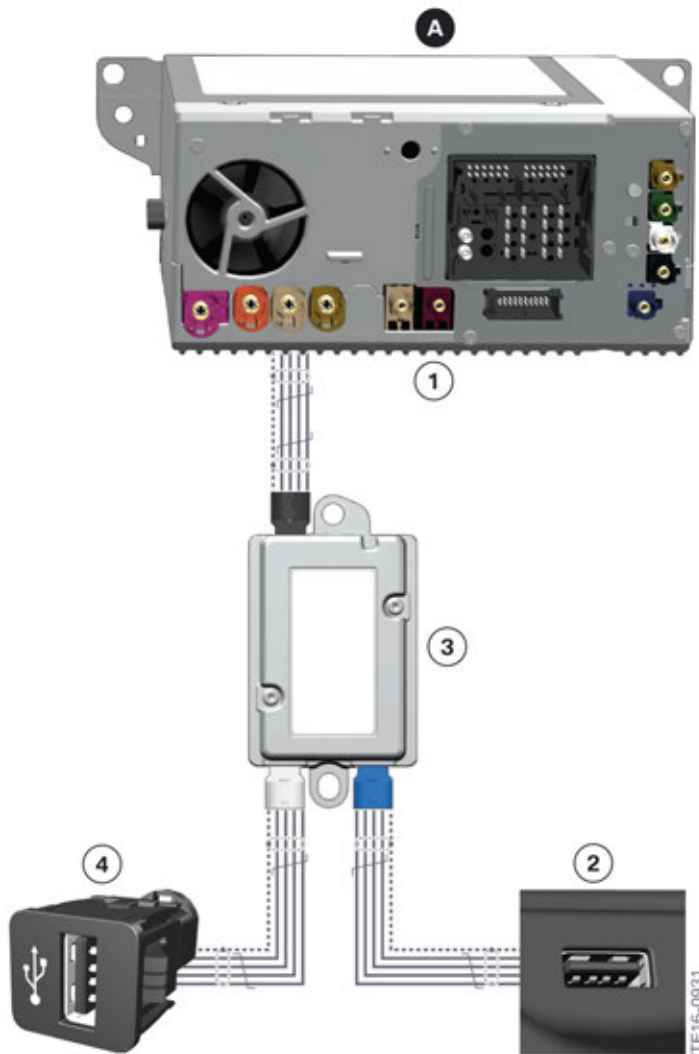
- A microphone on the drivers and passenger's side for improved voice quality.
- Two USB interfaces each with 2.1 A charge current.
- WiFi Hotspot optional equipment (OE 6WD) can be added.
- Possible to play videos via USB.
- Coupling of 2 mobile phones and an audio device simultaneously.

G30 Telephone and Telematics

4. Telephone Systems

USB interface

The following graphic provides an overview of the connections for the USB interface:



G30 Connection of USB interface to the head unit

Index	Explanation
A	USB interface for the convenient telephone with extended smartphone connection (OE 6NS) (standard equipment) or telephone system with wireless charging (OE 6NW) (optional equipment), two USB interfaces each with 2.1 A charge current
1	Headunit High 2 (HU-H2)
2	USB interface, center console front
3	USB hub
4	USB interface in the center console under the center armrest

The additional USB interface is installed in the center console under the center armrest.

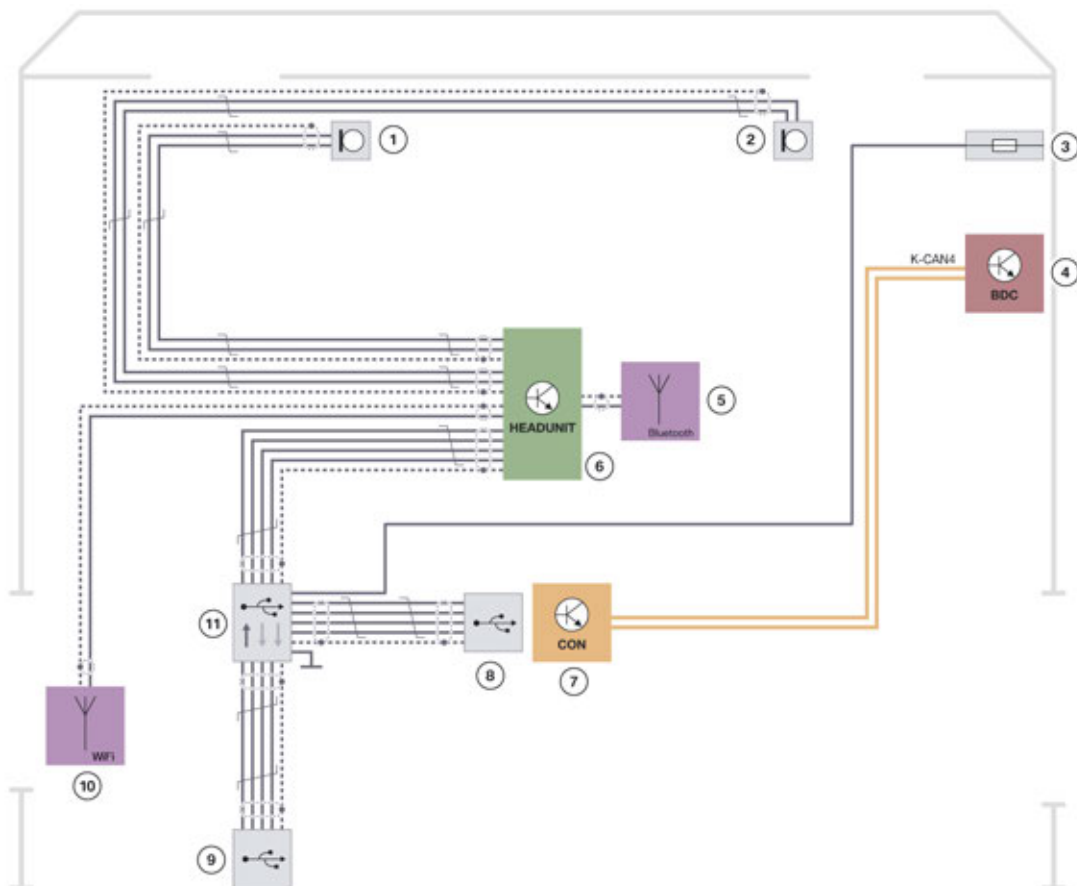
G30 Telephone and Telematics

4. Telephone Systems



G30 USB interface center console

System wiring diagram



G30 System wiring diagram for convenient telephone with extended smartphone connection

G30 Telephone and Telematics

4. Telephone Systems

Index	Explanation
1	Microphone, left
2	Microphone, right
3	Fuse for front right power distribution box
4	Body Domain Controller (BDC)
5	Bluetooth antenna
6	Headunit High 2 (HU-H2)
7	Controller (CON)
8	USB interface, center console front
9	USB interface in the center console under the center armrest
10	WiFi antenna for vehicle (WiFi)
11	USB hub

4.1.2. Telephone with wireless charging

Telephone with wireless charging (OE 6NW) has the same functions as the convenient telephone with extended smartphone connection. Additionally, the smartphone can be charged wirelessly and has a connection to the roof-mounted antenna.

Mobile phones must be compatible with wireless charging for this feature to operate.

Charge station

The wireless charging station is located in the front of the center console below the IHKA control panel. The wireless charging function and the connection to the roof-mounted antenna are identical to those for a wireless charging station under the center armrest (G12). If equipped, wireless charging of the BMW display key is also possible.

G30 Telephone and Telematics

4. Telephone Systems



BMW Display key

The display key is only available as an option in the 540i / 540i xDrive and M550i xDrive G30 vehicles.



G30 Wireless charging station in the front center console

G30 Telephone and Telematics

4. Telephone Systems

The smartphone must be placed on the wireless charging station. The charging status LED is in the tray.

LED display



G30 Wireless charging station LED

Index	Explanation
1	Area in which the smartphone should be placed
2	Charging status LED
3	Blue LED: Charging (Qi® compatible mobile phone & BMW display key)
4	Orange LED: Shutdown because of excess temperature (60°C / 140°F)
5	Red LED: Internal fault

4. Telephone Systems

System wiring diagram



G30 Telephone with wireless charging system wiring diagram

G30 Telephone and Telematics

4. Telephone Systems

Index	Explanation
1	Microphone, left
2	Microphone, right
3	Fuse for front right power distribution box
4	Body Domain Controller (BDC)
5	Bluetooth antenna
6	Headunit High 2 (HU-H2)
7	Controller (CON)
8	Wireless charging station (WCA)
9	Telematic Communication Box 2 (TCB2)
10	Fuses in the power distribution box of the luggage compartment
11	LTE compensator
12	USB interface in the center console under the center armrest
13	WiFi antenna for vehicle (WiFi)
14	USB hub
15	USB interface, center console front

G30 Telephone and Telematics

4. Telephone Systems

4.2. WiFi hotspot



G30 WiFi hotspot

The BMW Internet optional equipment (OE 6AR) is no longer offered in the G30.

The WiFi hotspot (OE 6WD) provides the capability of using the internet in the vehicle.

The hotspot in the vehicle can be used for a fee once registered. The WiFi antenna is installed in the TCB2.

4.2.1. Provider

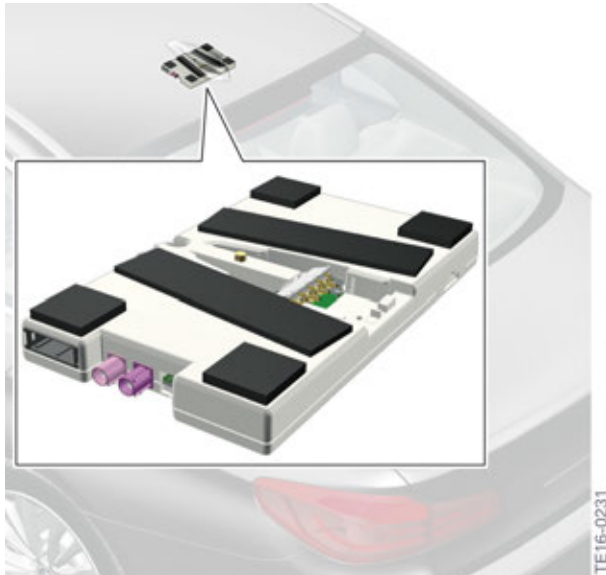
AT&T currently supports the hotspot for BMW.

G30 Telephone and Telematics

4. Telephone Systems

4.2.2. WiFi antenna

The WiFi antenna for the WiFi hotspot is built into the TCB2. The two telephone antennas in the roof-mounted antenna are used for transmitting and receiving via LTE.



G30 Telematic Communication Box 2 (TCB2)

4.2.3. Selection

The following graphic shows how to select the hotspot from the menu.



G30 Selecting the WiFi hotspot